

# The influence of early child-raising by grandparents on children's personality and adaptation

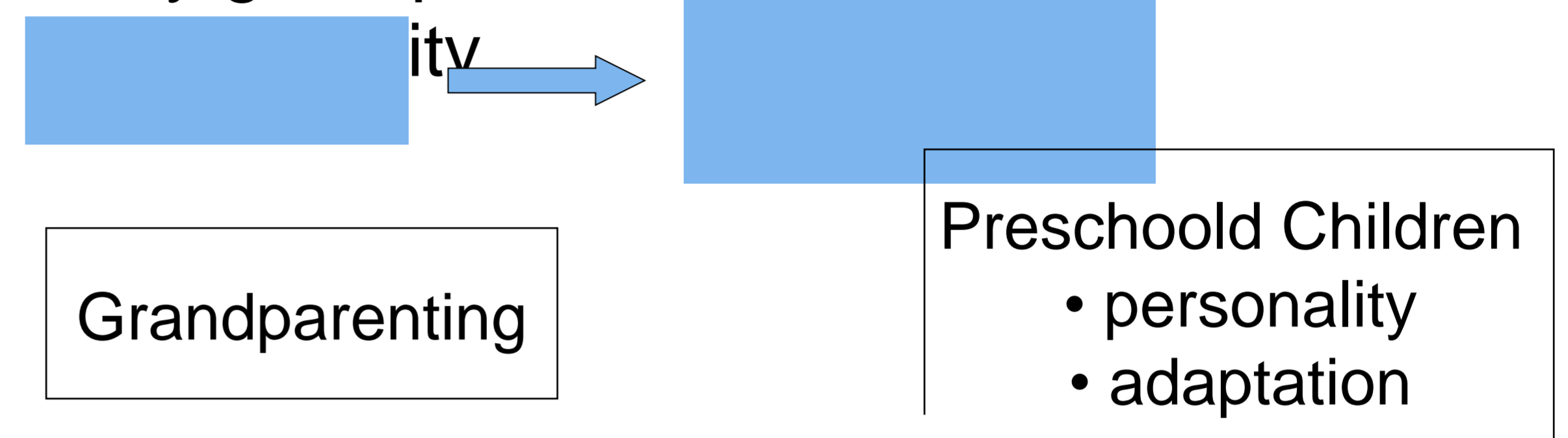
Yi Sun

Faculty of Core Research, Ochanomizu University, Japan, sun.yi@ocha.ac.jp

## Introduction

- In Chinese family with small children:
  - double working parents
  - no enough nursery school
  - grandparents are playing a very important role in child-caring from 0-3yrs old
- Problems:
  - less parent-child interaction
  - physical weakness of grandparents
  - different parenting value of parents & grandparents

- Few research about grandparenting in China
- Objective of this research  
examine the influence of early child-raising by grandparents on preschool children's



## Results

Three factors were extracted by exploratory factor analysis

- personality: stranger shyness (SS), easy frustration (EF) and prosociality (P)
- adaptation: difficulty in attending kindergarten (DAK), preoccupied attachment to parents (PAP)

## Method

- Participants: 530 parents of 3-6yrs children in Shanghai
- Questionnaire: demographics of family, parenting style, child's personality, class in kindergarten, child's adaptation in kindergarten

Table1: The personality and adaptation scores by grades in kindergarten

	DAK	PAP	SS	EF	P
Grade1	8.45	13.05	20.12	16.32	8.79
Grade2	6.61	12.04	19.38	15.45	9.86
Grade3	6.38	11.2	19.32	14.12	9.77

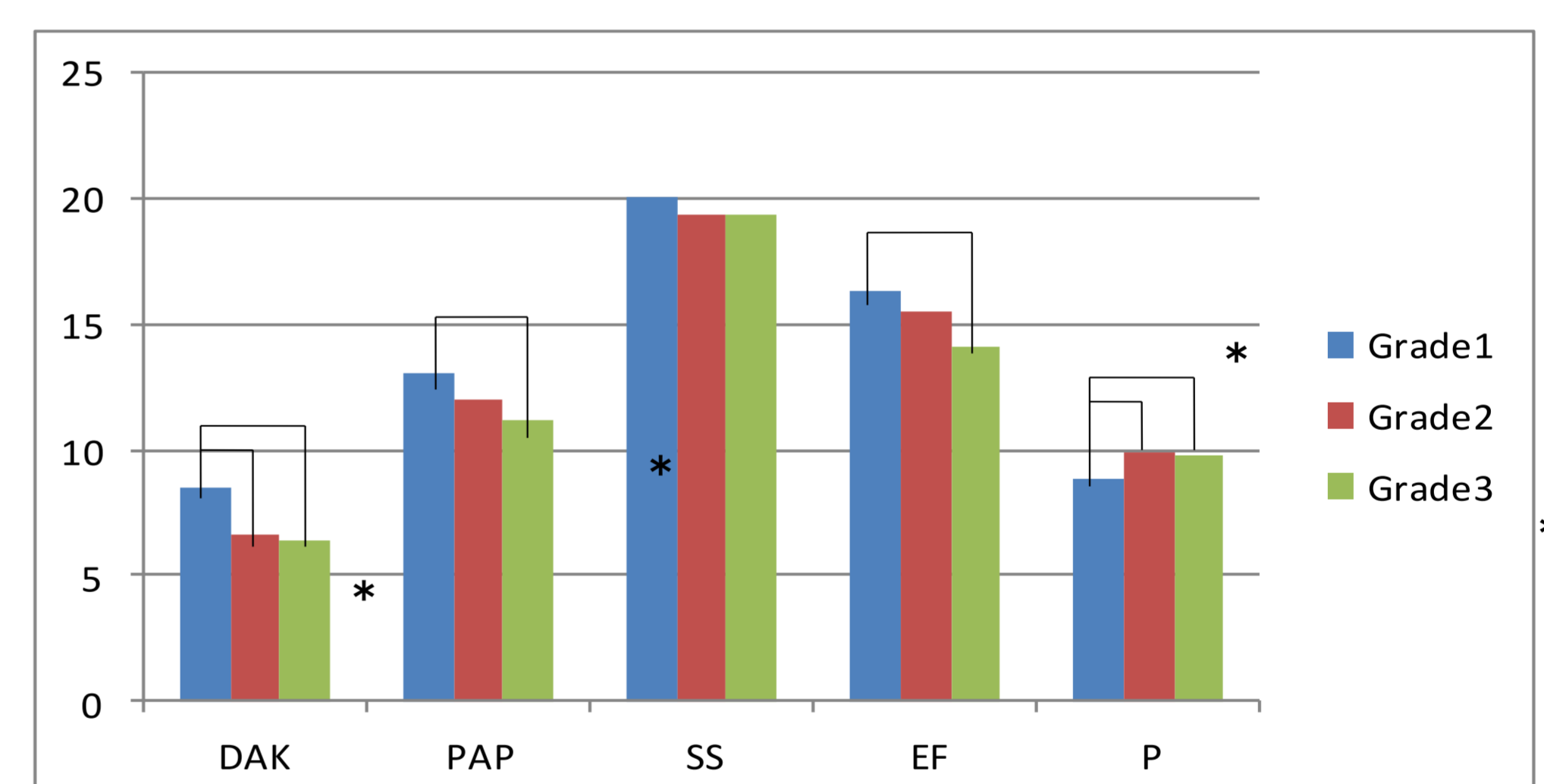


Figure 1: The differences in personality and adaptation by grades in kindergarten

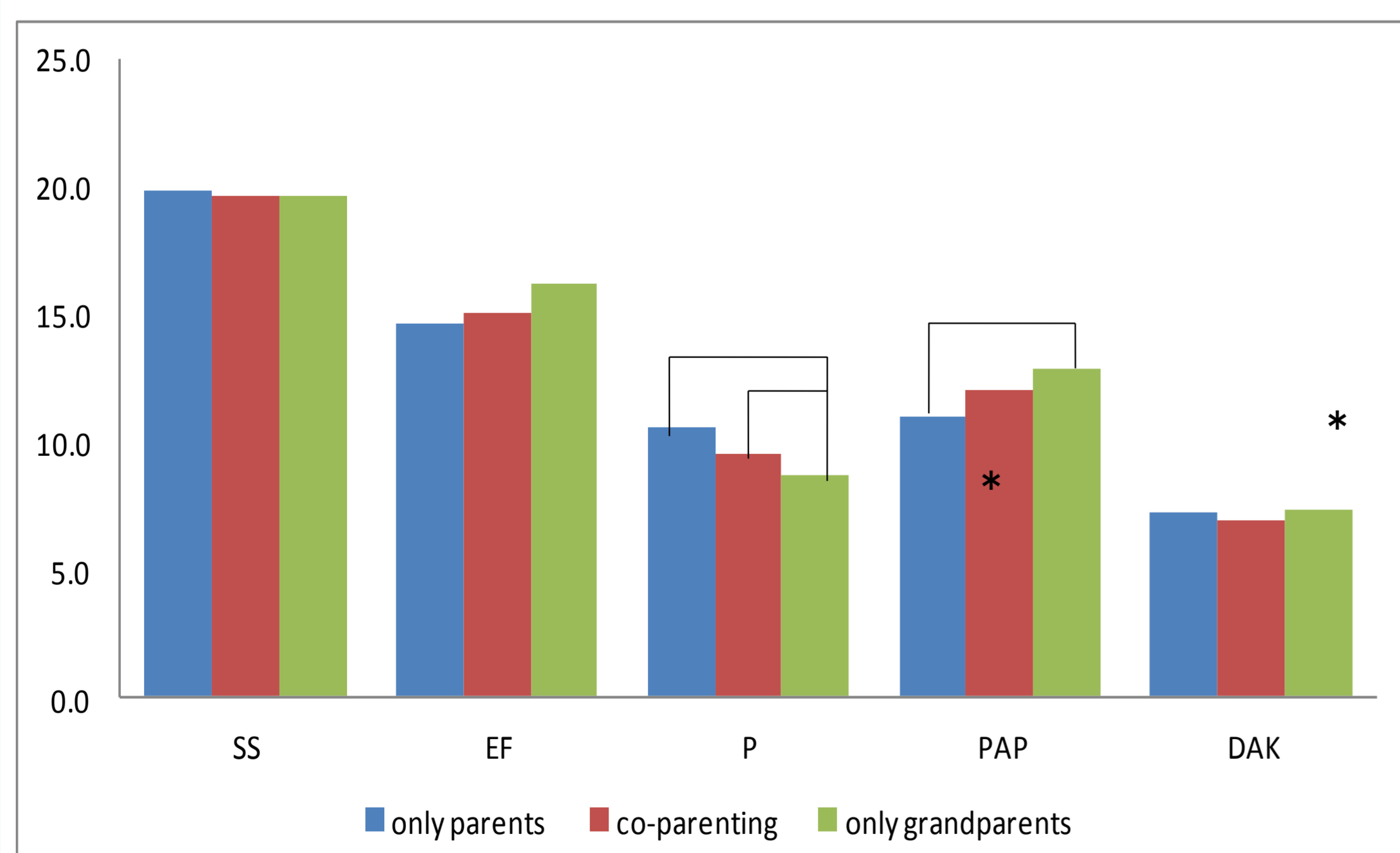


Figure 2. The difference in personality and adaptation by parenting style.  
\*  $p < .05$ ; \*\*  $p < .01$ .

## Conclusions

Although with children's growth, their emotion-control ability, prosociality and adaptation in kindergarten will be improved, the only-grandparents parenting style still may have some negative influence on children's personality and adaptation than only-parents parenting or co-parenting with grandparents.